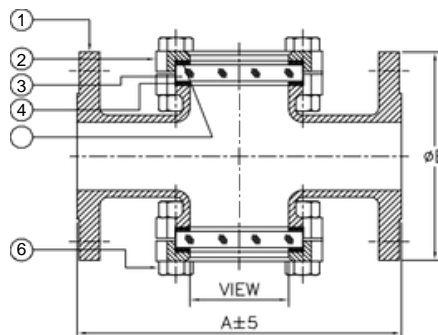
 <p>Durga Engineering works C-901, Concord Proxima, Banerroad, Pune 411045</p> <p>Jay Shukla Mobile No. 97308 33500 Mail id : Manufacturing.durga@gmail.com Mahesh Shukla Mobile No. 96230 33500 Mail id : durga.enterprisetrd@gmail.com</p>	Data Sheet	Data Sheet No : 01-008	ISO 9001 Registered
		Revision : 00	
		Page : 1 of 1	

• **Plain Type Double Window Sight Flow Indicator**



APPLICATIONS : Where no internal indication is required the is ideal when observing colour and clarity hold precedence over verifying flow.

OPERATING CONDITIONS:

Max Operating Pressure : 52 bar
Max Operating Temperature : 150⁰C – Soda lime Glass, 280⁰C – Borosilicate Glass

OPTIONS :


150 # , 300 # & 600 # PN 16 to PN 40 BS 10 Table 'F'
With Light Fittings With Anti-Frost Windows

CERTIFICATIONS : EN 10204 3.1B

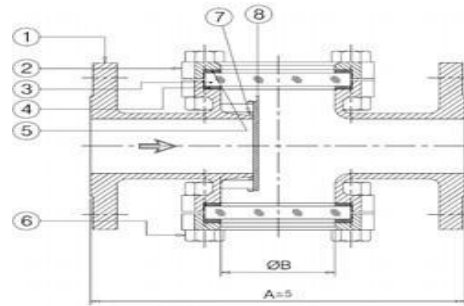
MATERIALS OF CONSTRUCTION :

Part No	Part Name	Standard Material		
1	Body	A 216 Gr. WCB	A 351 Gr. CF8	A 351 Gr. CF8M
2	Cover Plate	A 216 Gr. WCB	A 351 Gr. CF8	A 351 Gr. CF8M
3	Glass	Toughened Soda lime B S 3463 Max Temperature 150 ⁰ C		
		Toughened Borosilicate DIN 7080 Max Temperature 280 ⁰ C		
4	Sealing	CAF / Aramid	PTFE	
5	Cushion	CAF / Aramid (Non- Asbestos)		
6	Bolt Nuts	Zinc Plated 4.6/ 4	A 2 70	
	Finish	Ultramarine Blue RAL 5002 to suit 250C ⁰	Electro-polished for enhanced corrosion resistance	

Note: Also available in Cast Iron & Ductile Iron. Optional Materials will be provided on request

 <p>Durga Engineering works C-901, Concord Proxima, Banerroad, Pune 411045</p> <p>Jay Shukla Mobile No. 97308 33500 Mail id : Manufacturing.durga@gmail.com Mahesh Shukla Mobile No. 96230 33500 Mail id : durga.enterprisetrd@gmail.com</p>	Data Sheet	Data Sheet No : 01-008	ISO 9001 Registered
		Revision : 00	
		Page : 1 of 1	

□ **Flapper Type Double Window Sight Flow Indicator**



APPLICATIONS : Recommended for both horizontal and upward vertical flow these models are best suited to transparent or slightly opaque solutions and may also be used for gases. Variation in flow rates is indicated by the position of the flapper.

OPERATING CONDITIONS:

Max Operating Pressure : 52 bar
Max Operating Temperature : 150°C – Soda lime Glass, 280°C – Borosilicate Glass

OPTIONS :


150 # , 300 # & 600# PN 16 to PN 40 BS 10 Table 'F'
With Light Fittings With Anti-Frost Windows

CERTIFICATIONS: EN 10204 3.1B

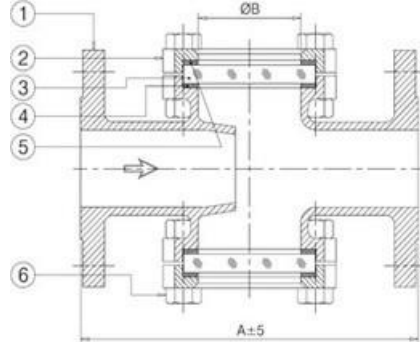
MATERIALS OF CONSTRUCTION :

Part No	Part Name	Standard Material		
1	Body	A 216 Gr. WCB	A 351 Gr. CF8	A 351 Gr. CF8M
2	Cover Plate	A 216 Gr. WCB	A 351 Gr. CF8	A 351 Gr. CF8M
3	Glass	Toughened Soda lime B S 3463 Max Temperature 150°C		
		Toughened Borosilicate DIN 7080 Max Temperature 280°C		
4	Sealing	CAF/ Aramid	PTFE	
5	Cushion	CAF / Aramid (Non- Asbestos)		
6	Bolt Nuts	Zinc Plated 4.6/ 4	A 2 70	
7	Flapper Rod	SS 304		SS 316
8	Flapper	SS 304		SS 316
	Finish	Ultramarine Blue RAL 5002 to suit 250C ⁰	Electro-polished for enhanced corrosion resistance	

Note: Also available in Cast Iron & Ductile Iron. Optional Materials will be provided on request

 <p>Durga Engineering works C-901, Concord Proxima, Banerroad, Pune 411045</p> <p>Jay Shukla Mobile No. 97308 33500 Mail id : Manufacturing.durga@gmail.com Mahesh Shukla Mobile No. 96230 33500 Mail id : durga.enterprisetrd@gmail.com</p>	Data Sheet	Data Sheet No : 01-008	ISO 9001 Registered
		Revision : 00	
		Page : 1 of 1	

□ **Drip Type Double Window Sight Flow Indicator**



APPLICATIONS: Recommended for applications in distillation & similar apparatus involving intermittent flow, Model 608-F is recommended for downward vertical flow. As the drip does not obstruct flow it may also be used for horizontal flow.

OPERATING CONDITIONS:

Max Operating Pressure : 52 bar
Max Operating Temperature : 150⁰C – Sodalime Glass, 280⁰C – Borosilicate Glass

OPTIONS :


150 # , 300 # & 600# PN 16 to PN 40 BS 10 Table 'F'
With Light Fittings With Anti-Frost Windows

CERTIFICATIONS: EN 10204 3.1B

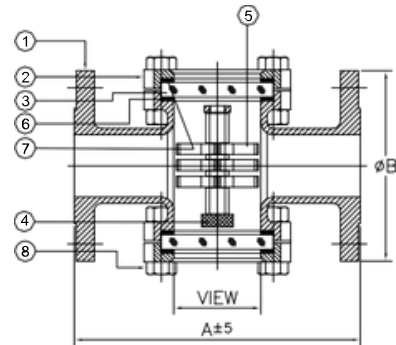
MATERIALS OF CONSTRUCTION:

Part No	Part Name	Standard Material		
1	Body	A 216 Gr. WCB	A 351 Gr.CF8	A 351 Gr. CF8M
2	Cover Plate	A 216 Gr. WCB	A 351 Gr.CF8	A 351 Gr. CF8M
3	Glass	Toughened Sodalime B S 3463 Max Temperature 150 ⁰ C		
		Toughened Borosilicate DIN 7080 Max Temperature 280 ⁰ C		
4	Sealing	CAF / Aramid	PTFE	
5	Cushion	CAF / Aramid (Non- Asbestos)		
6	Bolt Nuts	Zinc Plated 4.6/ 4	A 2 70	
	Finish	Ultramarine Blue RAL 5002 tosuit 250C ⁰	Electro-polished for enhanced corrosion resistance	

Note: Also available in Cast Iron & Ductile Iron. Optional Materials will be provided on request

 <p>Durga Engineering works C-901,Concord Proxima, Banerroad, Pune411045</p> <p>Jay Shukla Mobile No. 97308 33500 Mail id : Manufacturing.durga@gmail.com Mahesh Shukla Mobile No. 96230 33500 Mail id : durga.enterprisetrd@gmail.com</p>	Data Sheet	Data Sheet No : 01-008	ISO 9001 Registered
		Revision : 00	
		Page : 1 of 1	

□ **Rotor Type Double Window Sight Flow Indicator**



APPLICATIONS : Recommended for flow in any direction is best suited to lines carrying dark solutions where the rotor motion is easily detected. This model can also be used with transparent solution and gases. The PTFE Rotor is compatible to most media.

OPERATING CONDITIONS:

Max Operating Pressure : 52 bar
Max Operating Temperature : 150⁰C – Sodalime Glass, 280⁰C – Borosilicate Glass

OPTIONS :


150 # , 300 # & 600# PN 16 to PN 40 BS 10 Table 'F'
With Light Fittings With Anti-Frost Windows

CERTIFICATIONS : EN 10204 3.1B

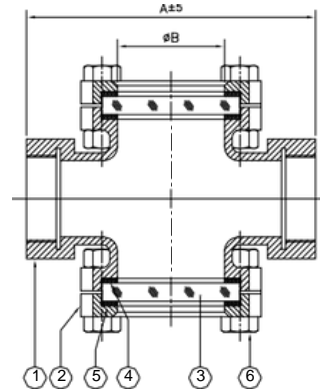
MATERIALS OF CONSTRUCTION :

PartNo	PartName	Standard Material		
1	Body	A 216 Gr. WCB	A 351 Gr.CF8	A 351 Gr. CF8M
2	Cover Plate	A 216 Gr. WCB	A 351 Gr.CF8	A 351 Gr. CF8M
3	Glass	Toughened Sodalime B S 3463 Max Temperature 150 ⁰ C		
		Toughened Borosilicate DIN 7080 Max Temperature 280 ⁰ C		
4	Rotor	PTFE		
5	Rotor Pin	SS 304		SS 316
6	Sealing	CAF / Aramid		PTFE
7	Cushion	CAF / Aramid (Non- Asbestos)		
8	Bolt Nuts	Zinc Plated 4.6/ 4		A 2 70
	Finish	Ultramarine Blue R ₀ AL 5002 to suit 250 C		Electro-polished for enhanced corrosion resistance

Note: Also available in Cast Iron & Ductile Iron. Optional Materials will be provided on request

 <p>Durga Engineering works C-901, Concord Proxima, Banerroad, Pune 411045</p> <p>Jay Shukla Mobile No. 97308 33500 Mail id : Manufacturing.durga@gmail.com Mahesh Shukla Mobile No. 96230 33500 Mail id : durga.enterprisetrd@gmail.com</p>	Data Sheet	Data Sheet No : 01-008	ISO 9001 Registered
		Revision : 00	
		Page : 1 of 1	

□ **Plain Type Double Window Sight Flow Indicator**



APPLICATIONS : Where no internal indication is required the Model 405-S is ideal when observing colour and clarity hold precedence over verifying flow.

OPERATING CONDITIONS:

Max Operating Pressure : 52 bar
Max Operating Temperature : 150°C – Soda lime Glass, 280°C – Borosilicate Glass

OPTIONS :


With NPT Threads Socket Weld Ends (Cast Steel and Stainless only)
With Light Fittings With Anti-Frost Windows

CERTIFICATIONS : EN 10204 3.1B

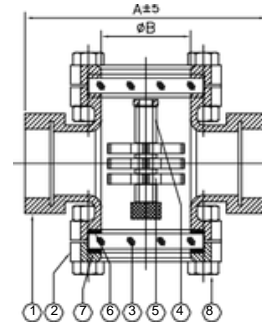
MATERIALS OF CONSTRUCTION :

Part No	Part Name	Standard Material		
1	Body	A 216 Gr. WCB	A 351 Gr. CF8	A 351 Gr. CF8M
2	Cover Plate	A 216 Gr. WCB	A 351 Gr. CF8	A 351 Gr. CF8M
3	Glass	Toughened Soda lime B S 3463 Max Temperature 150°C		
		Toughened Borosilicate DIN 7080 Max Temperature 280°C		
4	Sealing	CAF / Aramid	PTFE	
5	Cushion	CAF / Aramid (Non- Asbestos)		
6	Bolt Nuts	Zinc Plated 4.6/ 4	A 2 70	
	Finish	Ultramarine Blue RAL 5002 to suit 250C ⁰	Electro-polished for enhanced corrosion resistance	

Note: Also available in Cast Iron & Ductile Iron. Optional Materials will be provided on request

 <p>Durga Engineering works C-901, Concord Proxima, Banerroad, Pune 411045</p> <p>Jay Shukla Mobile No. 97308 33500 Mail id : Manufacturing.durga@gmail.com Mahesh Shukla Mobile No. 96230 33500 Mail id : durga.enterprisetrd@gmail.com</p>	Data Sheet	Data Sheet No : 01-008	ISO 9001 Registered
		Revision : 00	
		Page : 1 of 1	

□ **Rotor Type Double Window Sight Flow Indicator**



APPLICATIONS : Recommended for flow in any direction, Model 305-S is best suited to lines carrying dark solutions where the rotor motion is easily detected. This model can also be used with transparent solution and gases. The PTFE Rotor is compatible to most media.

OPERATING CONDITIONS:

Max Operating Pressure : 52 bar
Max Operating Temperature : 150°C – Sodalime Glass, 280°C – Borosilicate Glass

OPTIONS :


With NPT Threads Socket Weld Ends (Cast Steel and Stainless only)
With Light Fittings With Anti-Frost Windows

CERTIFICATIONS : EN 10204 3.1B

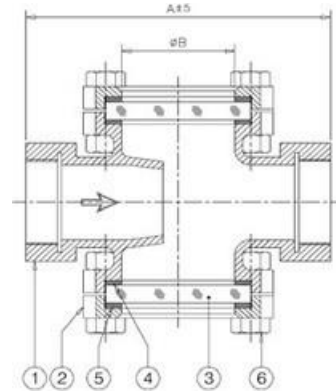
MATERIALS OF CONSTRUCTION :

Part No	Part Name	Standard Material		
1	Body	A 216 Gr. WCB	A 351 Gr. CF8	A 351 Gr. CF8M
2	Cover Plate	A 216 Gr. WCB	A 351 Gr. CF8	A 351 Gr. CF8M
3	Glass	Toughened Sodalime B S 3463 Max Temperature 150°C		
		Toughened Borosilicate DIN 7080 Max Temperature 280°C		
4	Rotor Pin	SS 304		SS 316
5	Rotor	PTFE		
6	Sealing	CAF / Aramid	PTFE	
7	Cushion	CAF / Aramid (Non- Asbestos)		
8	Bolt Nuts	Zinc Plated 4.6 /4	A 2 70	
	Finish	Ultramarine Blue RAL 5002 to suit 250C ⁰	Electro-polished for enhanced corrosion resistance	

Note: Also available in Cast Iron & Ductile Iron. Optional Materials will be provided on request

 <p>Durga Engineering works C-901, Concord Proxima, Banerroad, Pune 411045</p> <p>Durga Engineering Co. Jay Shukla Mobile No. 97308 33500 Mail id : Manufacturing.durga@gmail.com Mahesh Shukla Mobile No. 96230 33500 Mail id : durga.enterprisetrd@gmail.com</p>	Data Sheet	Data Sheet No : 01-008	ISO 9001 Registered
		Revision : 00	
		Page : 1 of 1	

□ **Drip Type Double Window Sight Flow Indicator**



APPLICATIONS: Recommended for applications in distillation & similar apparatus involving intermittent flow. Though recommended for downward vertical flow, the drip does not obstruct flow and may also be used for horizontal flow.

OPERATING CONDITIONS:

Max Operating Pressure : 52 bar
Max Operating Temperature : 150⁰C – Soda lime Glass, 280⁰C – Borosilicate Glass

OPTIONS :


With NPT Threads Socket Weld Ends (Cast Steel and Stainless only)
With Light Fittings With Anti-Frost Windows

CERTIFICATIONS : EN 10204 3.1B

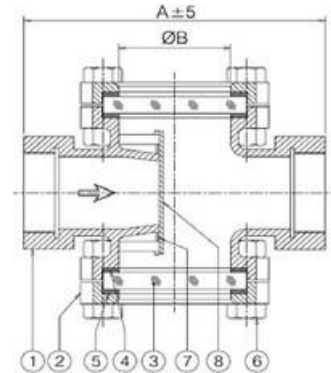
MATERIALS OF CONSTRUCTION :

Part No	Part Name	Standard Material		
1	Body	A 216 Gr. WCB	A 351 Gr. CF8	A 351 Gr. CF8M
2	Cover Plate	A 216 Gr. WCB	A 351 Gr. CF8	A 351 Gr. CF8M
3	Glass	Toughened Soda lime B S 3463 Max Temperature 150 ⁰ C		
		Toughened Borosilicate DIN 7080 Max Temperature 280 ⁰ C		
4	Sealing	CAF / Aramid	PTFE	
5	Cushion	CAF / Aramid (Non- Asbestos)		
6	Bolt Nuts	Zinc Plated 4.6 / 4	A 2 70	
	Finish	Ultramarine Blue RAL 5002 to suit 250C ⁰	Electro-polished for enhanced corrosion resistance	

Note: Also available in Cast Iron & Ductile Iron. Optional Materials will be provided on request

 <p>Durga Engineering works C-901, Concord Proxima, Banerroad, Pune 411045</p> <p>Jay Shukla Mobile No. 97308 33500 Mail id : Manufacturing.durga@gmail.com Mahesh Shukla Mobile No. 96230 33500 Mail id : durga.enterprisetrd@gmail.com</p>	Data Sheet	Data Sheet No : 01-008	ISO 9001 Registered
		Revision : 00	
		Page : 1 of 1	

□ **Flapper Type Double Window Sight Flow Indicator**



APPLICATIONS : Recommended for both horizontal and upward vertical flow these models are best suited to transparent or slightly opaque solutions and may also be used for gases. Variation in flow rates is indicated by the position of the flapper.

OPERATING CONDITIONS:

Max Operating Pressure : 52 bar
Max Operating Temperature : 150⁰C – Soda lime Glass, 280⁰C – Borosilicate Glass

OPTIONS :


With NPT Threads Socket Weld Ends (Cast Steel and Stainless only)
With Light Fittings With Anti-Frost Windows

CERTIFICATIONS : EN 10204 3.1B

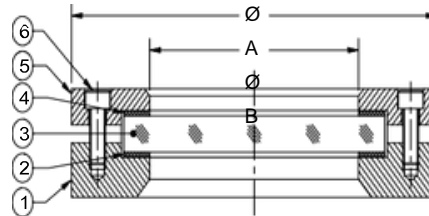
MATERIALS OF CONSTRUCTION :

Part No	Part Name	Standard Material		
1	Body	A 216 Gr. WCB	A 351 Gr.CF8	A 351 Gr. CF8M
2	Cover Plate	A 216 Gr. WCB	A 351 Gr.CF8	A 351 Gr. CF8M
3	Glass	Toughened Soda lime B S 3463 Max Temperature 150 ⁰ C		
		Toughened Borosilicate DIN 7080 Max Temperature 280 ⁰ C		
4	Sealing	CAF / Aramid	PTFE	
5	Cushion	CAF / Aramid (Non- Asbestos)		
6	Bolt Nuts	Zinc Plated 4.6/ 4	A 2 70	
7	Flapper Rod	SS 304		SS 316
8	Flapper	SS 304		SS 316
	Finish	Ultramarine Blue RAL 5002tosuit250C ⁰	Electro-polished for enhanced corrosion resistance	

Note: Also available in Cast Iron & Ductile Iron. Optional Materials will be provided on request

 Durga Engineering works C-901, Concord Proxima, Banerroad, Pune 411045 Jay Shukla Mobile No. 97308 33500 Mail id : Manufacturing.durga@gmail.com Mahesh Shukla Mobile No. 96230 33500 Mail id : durga.enterprisetr@gmail.com	Data Sheet	Data Sheet No : 01-008	ISO 9001 Registered
		Revision : 00	
		Page : 1 of 1	

□ **Disc Type Sight Flow Indicator**



APPLICATIONS : Model 5305 Weld on Sight windows are used where chemical or physical processes, reactions or fluid levels have to be observed, controlled or read off at the interior of stirred tanks, dryers, columns, silos, centrifuges, mixers, reactors, evaporators, separators, pipelines, pressure vessels and other closed containers and **where there is no pressure.**

The advantages of this lightweight low profile Model 5305 over Model 5205 for atmospheric vessels are:

Smaller Outer diameter, and therefore vessel cutout
Lower weight

Shallower height above weld.
Easier to clean.

OPERATING CONDITIONS:

Nominal Pressure: Nil, No Pressure.


Nominal Temp: Depending on the glass and the gaskets used.

CERTIFICATES:

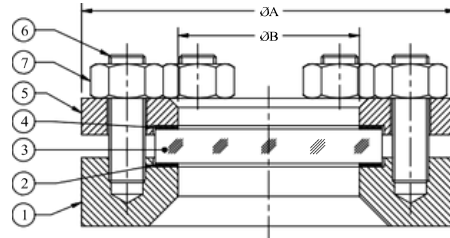
Depending on the customer requirements certification and testing as per **EN 10204 3.1 B** can be provided at an extra cost

Ref. No.	Part Name	Standard Material
1	Base Flange	ASTM A 240 (304 / 316)
2	Sealing	PTFE/ PTFE Envelope With Neoprene Insert
3	Glass	Toughened Imported Belgium
4	Cushion	Neoprene
5	Cover Plate	IS 210 FG 200
6	Allen Bolt	Steel

NOTE: Optional materials will be provided on request.

 Durga Engineering works C-901, Concord Proxima, Banerroad, Pune 411045 Jay Shukla Mobile No. 97308 33500 Mail id : Manufacturing.durga@gmail.com Mahesh Shukla Mobile No. 96230 33500 Mail id : durga.enterprisetrd@gmail.com	Data Sheet	Data Sheet No : 01-008	ISO 9001 Registered
		Revision : 00	
		Page : 1 of 1	

□ Weld on **Type Sight Flow Indicator**



APPLICATIONS : Weld on Sight windows are used where chemical or physical processes, reactions or fluid levels have to be observed, controlled or read off at the interior of stirred tanks, dryers, columns, silos, centrifuges, mixers, reactors, evaporators, separators, pipelines, pressure vessels and other closed containers.

OPERATING CONDITIONS:

Nominal Pressure: PN 6, PN 10 & PN 16.
 Nominal Temp: Depending on the glass and the gaskets used. (Request Data sheet for materials and their temperature ratings.)

CERTIFICATES:

Depending on the customer requirements certification and testing as per **EN 10204 3.1 B** can be provided at an extra cost.

MATERIAL SPECIFICATION:

Ref. No.	Part Name	Standard Material	
1	Base Flange	IS 2062 / A 515 Gr. 70	ASTM A 240 (304 / 316)
2	Sealing	Aramid	PTFE / PTFE Envelope With Neoprene Insert
3	Glass	Toughened Sodalime Max 150°C	Toughened Borosilicate Max 280°C
4	Cushion	CAF	Aramid (Non Asbestos)
5	Cover Plate	Carbon Steel	
6	Stud	Zinc Plated Steel	
7	Nut	Zinc Plated Steel	

NOTE: Optional materials will be provided on request.